

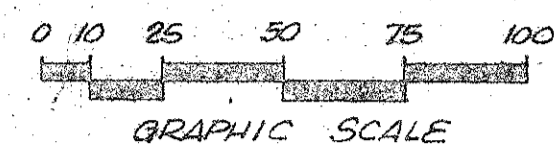
38-41

P.U.D. TIBURON II - PHASE II

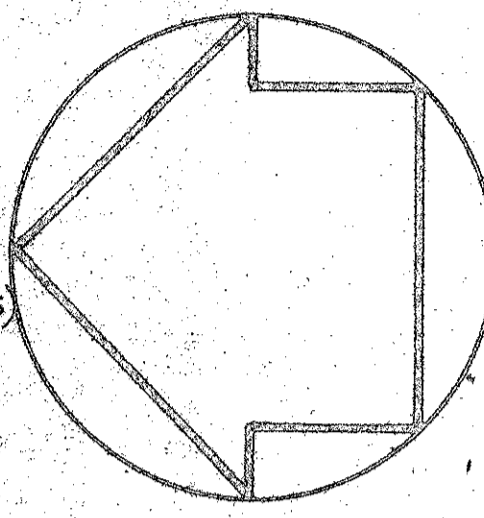
BEING A REPLAT OF A PORTION OF TRACT 31-A, "BOCA DEL MAR N° 4", PLAT BOOK 30, PAGE 86 PUBLIC RECORDS OF PALM BEACH COUNTY, FLORIDA. LYING AND BEING IN THE SOUTHWEST ¼ OF SECTION 22, TOWNSHIP 47 SOUTH, RANGE 42 EAST PALM BEACH COUNTY FLORIDA

41

PREPARED BY
SCHWEBKE-SHISKIN & ASSOC., INC.
LAND SURVEYORS - ENGINEERS - ARCHITECTS - LAND PLANNERS
MIAMI FLORIDA
ORDER N° 134102 SCALE: 1" = 40' MAY, 1979.



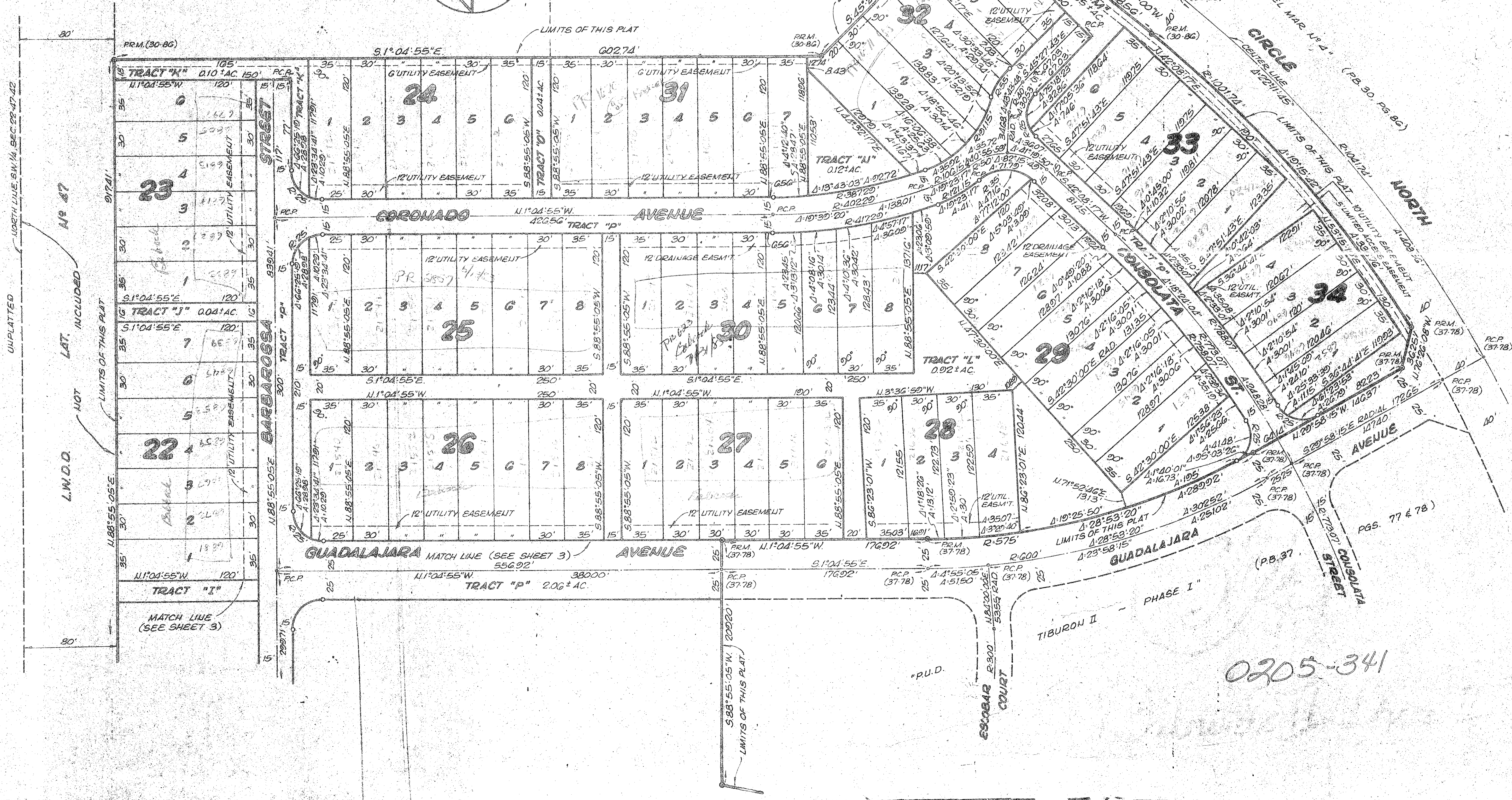
GRAPHIC SCALE
SHEET 2 OF 3 SHEETS



"AMBERWOODS OF BOCA" (P.B. 33, PGS. 23, 24, 25)

"P.U.D. BOCA DEL MAR N° 4" (P.B. 30, PG. 86)

FLOOD ZONE
(DEPTH 1')



UNPLATTED

LAT. INCLUDED

NOT

L.W.O.D.

TIBURON II - PHASE I

0205-341

PGS. 77 & 78